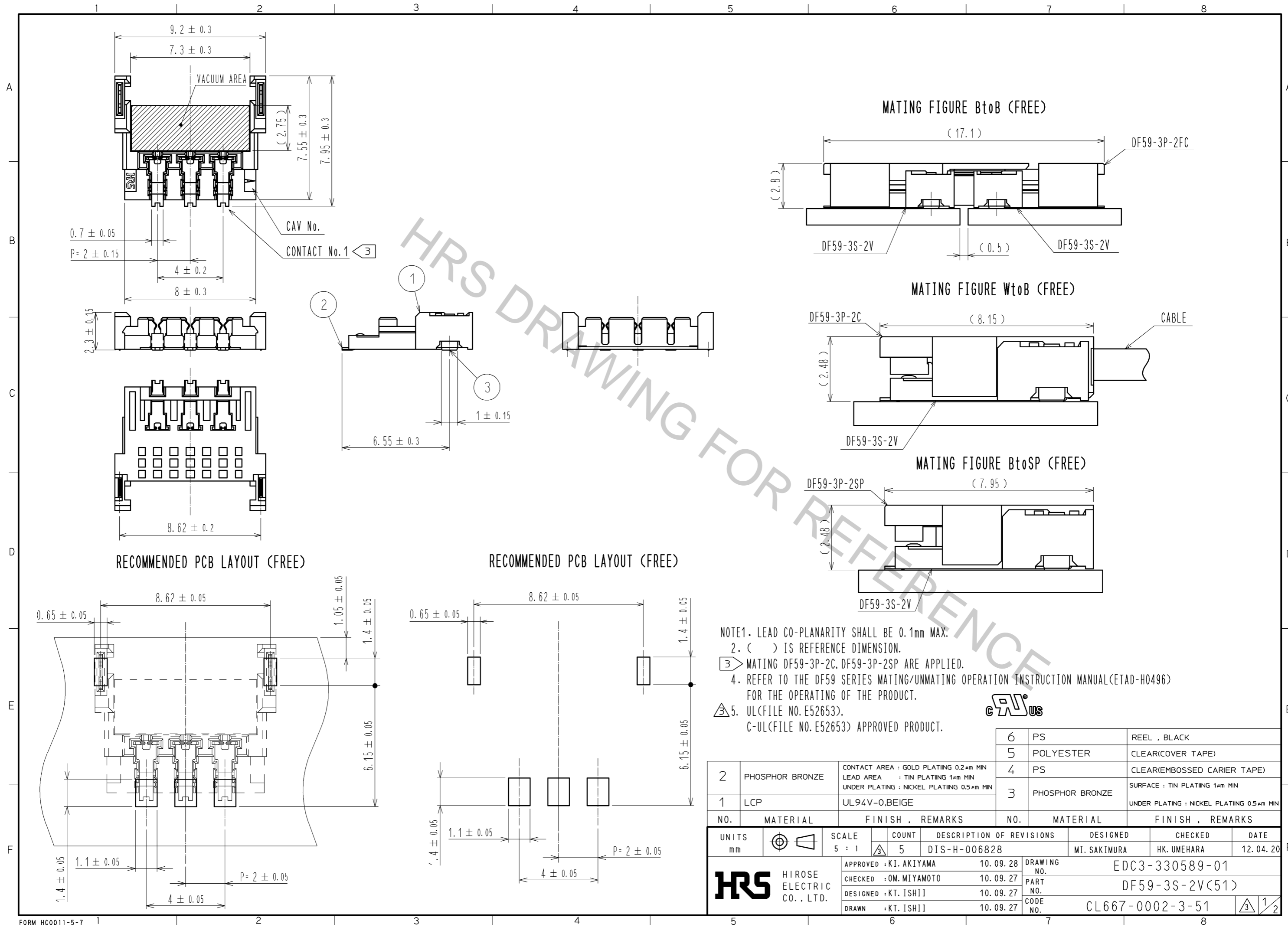


Jun.1.2018 Copyright 2018 HIROSE ELECTRIC CO., LTD. All Rights Reserved.  
 In case of consideration for using Automotive equipment /  
 device which demand high reliability, kindly contact our sales window correspondents.

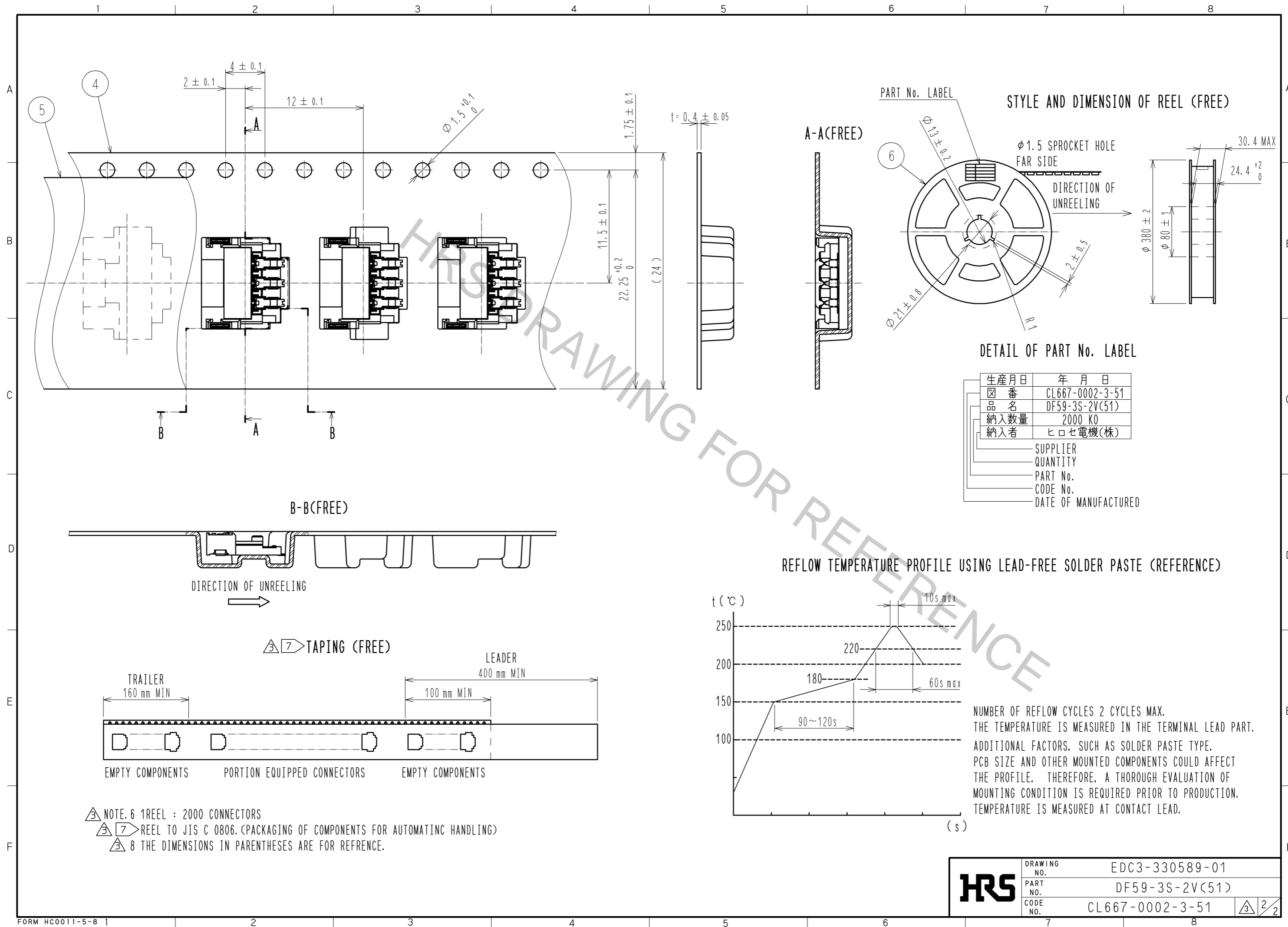


NOTE1. LEAD CO-PLANARITY SHALL BE 0.1mm MAX.  
 2. ( ) IS REFERENCE DIMENSION.  
 ③ MATING DF59-3P-2C, DF59-3P-2SP ARE APPLIED.  
 4. REFER TO THE DF59 SERIES MATING/UNMATING OPERATION INSTRUCTION MANUAL(ETAD-H0496)  
 FOR THE OPERATING OF THE PRODUCT.  
 ⑤ UL(FILE NO. E52653),  
 C-UL(FILE NO. E52653) APPROVED PRODUCT.



2	PHOSPHOR BRONZE	CONTACT AREA : GOLD PLATING 0.2μm MIN LEAD AREA : TIN PLATING 1μm MIN UNDER PLATING : NICKEL PLATING 0.5μm MIN	6	PS	REEL , BLACK	
1	LCP	UL94V-0,BEIGE	5	POLYESTER	CLEAR(COVER TAPE)	
			4	PS	CLEAR(EMBOSSED CARRIER TAPE)	
			3	PHOSPHOR BRONZE	SURFACE : TIN PLATING 1μm MIN UNDER PLATING : NICKEL PLATING 0.5μm MIN	
NO.	MATERIAL	FINISH , REMARKS	NO.	MATERIAL	FINISH , REMARKS	
UNITS	mm	SCALE	5 : 1	COUNT	5	
		DESCRIPTION OF REVISIONS	DESIGNED	MI. SAKIMURA	CHECKED	HK. UMEHARA
		DATE	12.04.20			
APPROVED : KI. AKIYAMA		10.09.28	DRAWING NO. EDC3-330589-01			
CHECKED : OM. MIYAMOTO		10.09.27	PART NO. DF59-3S-2V(51)			
DESIGNED : KT. ISHII		10.09.27	CODE NO. CL667-0002-3-51			
DRAWN : KT. ISHII		10.09.27	1/2			

Jun.1.2018 Copyright 2018 HIROSE ELECTRIC CO., LTD. All Rights Reserved.  
 In case of consideration for using Automotive equipment /  
 device which demand high reliability, kindly contact our sales window correspondents.

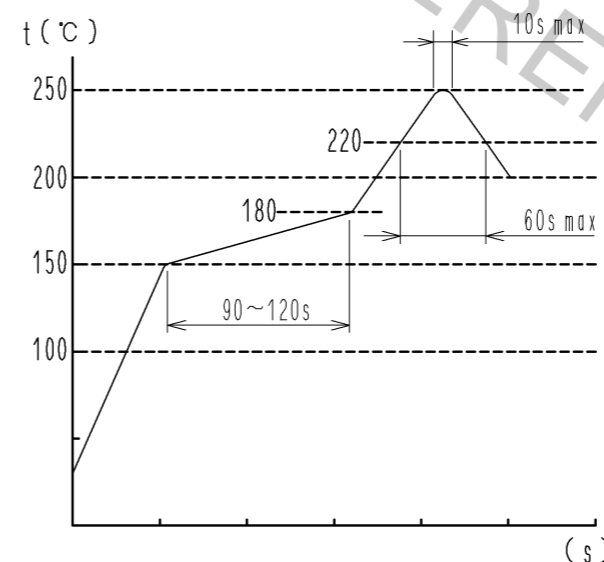


STYLE AND DIMENSION OF REEL (FREE)

DETAIL OF PART No. LABEL

生産月日	年月日
図番	CL667-0002-3-51
品名	DF59-3S-2V(51)
納入数量	2000 KO
納入者	ヒロセ電機(株)
SUPPLIER	
QUANTITY	
PART No.	
CODE No.	
DATE OF MANUFACTURED	

REFLOW TEMPERATURE PROFILE USING LEAD-FREE SOLDER PASTE (REFERENCE)



NUMBER OF REFLOW CYCLES 2 CYCLES MAX.  
 THE TEMPERATURE IS MEASURED IN THE TERMINAL LEAD PART.  
 ADDITIONAL FACTORS, SUCH AS SOLDER PASTE TYPE,  
 PCB SIZE AND OTHER MOUNTED COMPONENTS COULD AFFECT  
 THE PROFILE. THEREFORE, A THOROUGH EVALUATION OF  
 MOUNTING CONDITION IS REQUIRED PRIOR TO PRODUCTION.  
 TEMPERATURE IS MEASURED AT CONTACT LEAD.

- NOTE. 6 1 REEL : 2000 CONNECTORS
- REEL TO JIS C 0806. (PACKAGING OF COMPONENTS FOR AUTOMATIC HANDLING)
- THE DIMENSIONS IN PARENTHESES ARE FOR REFERENCE.

<b>HRS</b>	DRAWING NO.	EDC3-330589-01
	PART NO.	DF59-3S-2V(51)
	CODE NO.	CL667-0002-3-51
		2/2